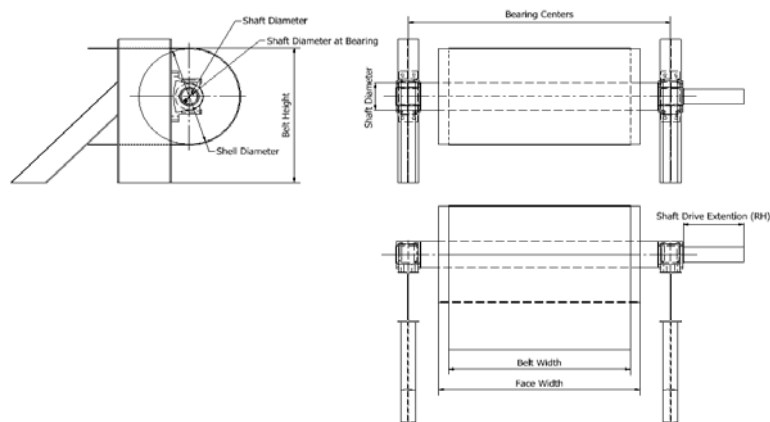


Caddman Development

**Design your conveyor using
standard inventory items**

c-Conveyor is the **latest** CADDMAN tool
to be added to C-Cut Steel.

Standard head pulley components automatically
generated to the input value's. Just constrain them in a
assembly.



Parameter	Value
Belt Width (mm)	1800
Shell Diameter (mm)	1000
Face Width (mm)	2000
Bearing Centers (mm)	2600
Shaft Diameter (mm)	280
Shaft Diameter At Bearing (mm)	180
Shaft Drive Extension (RH) (mm)	600
Shaft Drive Extension (LH) (mm)	0
Belt Height (mm)	1400
Belt Angle	0
Bearing Size	220
Bearing Housing	3148

Frame type: ☒ I ☐ L ☐ U

Seat: ☐ Bearing Seat ☐ Idler Seat

FrameType 1

Exit OK

To use the latest version of c-Conveyor you require
Autodesk Inventor® as well as
Microsoft Access loaded on your PC.

